

SECTION H – CONTESTS & EVENTS

Department 1000

OUTSTANDING EXHIBITOR AWARDS

Awards for Top Number of Entries in the fair

Premiums: 1st, 2nd, 3rd, 4th, 5th \$100, \$75, \$50, \$25, \$25

Department 1010

CORN HOLE TOURNAMENTS

Committee: Josh Brown, Chair, (615-489-3533) or email:

downtown101st@gmail.com, Brian Jones, Ben Brown, Carter Randolph

\$150 Added

1010 First Tournament – Music Barn – South or East Gate Entrance

Saturday, August 3 – 9:30a Registration and Warm-Up

10a Tournament Starts

\$150 Added

1011 Second Tournament – Music Barn – South or East Gate Entrance

Tuesday, August 6 – 5:30p Registration and Warm-Up

6p Tournament Starts

**1012 NEW Putnam County Firemen and Law Enforcement Corn Hole
Tournament (by invitation)*****

Friday, August 9 – 5:30p Registration and Warm Up

6p Tournament

***Maximum 4 teams each – pre-register with Brian Jones, Fair Board

Winners – \$250 to designated charity

Second – \$150 to designated charity

Third – \$100 to designated charity

Department 1015

HORSE SHOE TOURNAMENTS

Committee: Matt Adermann, Chair – 931-881-5268, Brian Jones,
Dawsen Arms, Jacob Crum

Entry Fee: \$25 per person For more information call Chair.

- Rules:
1. All entry fees to be paid back 100% plus added money
 2. All teams will be randomly drawn.
 3. Scoring announced at competition start.

4. Prize money paid in flights according to number of entries.
5. Entry fees must be paid before competition starts -- \$25 per person.
6. Tournaments limited to 32 teams.
7. Double Elimination format used.
8. Judges decisions final in all disputes.
9. Pre-entry is strongly suggested.

1015 First Tournament – Big Barn – South or East Gate Entrance
Thursday, August 1, 5:00p Registration and Warm Up
6:00p Tournament Starts
\$150 Added

1016 Second Tournament – Big Barn – South or East Gate Entrance
Thursday, August 8 – 5:00p Registration and Warm Up
6:00p Tournament Starts
\$150 Added

Department 1020

PICK-TN PRODUCTS EATING CONTEST

Committee: Susanna Clouse, Chair, Grace Clouse, Austin Archer, Dawson Davidson, Morgan Price

The Putnam County Fair supports Pick-TN Products with a display of products, live demonstrations by Pick-TN Products Producers and the New Pick-TN Eating Contests

Rules:

1. Please note judges decisions are final.
2. All specifications on food products are given in the schedule.
3. Contestants are allowed to drink water as needed during the competition.
4. Contestants are allowed to use their hands with the exception of the watermelon, and a spoon will be given for the pie eating contest. Watermelon contest requires that both hands be held behind your back until finished.
5. Contestants must remain in their seat, to signal to the judges you are done either stand or raise your hand.
6. Visible signs of illness may result in disqualification.
7. Winner is first to finish the food given or the contestant with the least amount left at the end of five minutes.
8. In the event of a tie an eat-off will be held.

Lot 1

\$100 to the winner's designated charity – Date

Sunday, August 4 – 4p Dipsy Doodle Pie Eating Contest – Elected Officials

Main Arena Stage

Lot 2

\$20 to the winner – Date

Sunday, August 4 – 4:30p Watermelon Eating Contest – Junior Fair Board

Main Arena Stage

Lot 3

\$20 to the winner – Date

Ralph's Donut Shop Butter Twists – Maximum Six Contestants Each Age Group

Picnic Tables in front of the Fair Office

6-9 Year olds – 2 twists

10-13 Year olds – 3 twists

14-18 year olds – 3 twists

SECTION I – MOTOR EVENTS

Department 1100

MOTORCYCLE, ATV FLAT TRACK & TECHNICAL TERRAIN RACING

Race TN Series

Wednesday, August 7

Gates open at 4p Races start at 6:30p

Committee

Brian Jones, Roger Dereske, Chad Crain – Race Tennessee

Entry Fees: Amateur & Vet Classes: \$10 Pro-Am: \$20 Pro Classes: \$30

Late registration is subject to a penalty fee

Registration begins at 4p and ends at 5p. Online registration is highly recommended.

REGISTER ONLINE AT: www.racetnseries.com

100% payback of entry fees goes to the riders in all classes!

5 rider minimum per class in order to receive payback

Paying 1st 50%, 2nd 30%, 3rd 20%. All youth classes receive a trophy

AMA and/or Race TN Membership not required to race. Series Members will receive series points. You can become a series member at

www.racetnseries.com

Rules: A helmet & protective gear must be worn at all times. Absolutely no pit riding allowed. Anyone under 18 must have a parent/legal guardian sign a release form to compete. All ATV's must have a functioning lanyard-type kill switch. Functionality will be tested during registration. For a full list of rules visit www.racetnseries.com.

Classes: All classes will follow modified rules unless labeled stock.

Classes will be divided by age groups if needed.

Class order subject to change.

Go to www.putnamcountyfair.org for Classes after April 1, 2019.

Riders will use West Entrance to the Main Arena.

Department 1200

DEMOLITION DERBY

Sunday, August 5 – 5p

Committee

Matt Groover, Roger Dereske, Brian Jones

Four (4) Classes paying out a total of \$8,800 + Contingences \$200

V8 Stock – 1st \$ 1000, 2nd \$ 500, 3rd \$ 250, 4th \$ 150, 5th \$ 100

Front Wheel Drive – 1st \$ 1,000, 2nd \$ 500, 3rd \$ 250, 4th \$ 150, 5th \$ 100

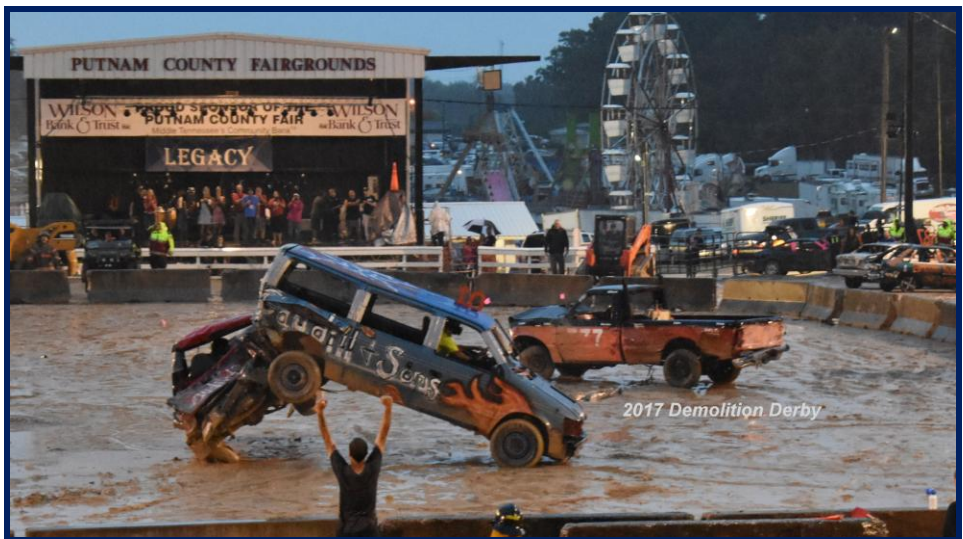
Welded Stock – 1st \$ 1,500, 2nd \$750, 3rd \$ 400, 4th 200, 5th \$ 100

Powder Puff – 1st \$ 500, 2nd \$ 300, 3rd \$ 150, 4th \$100

**Don't miss the biggest and best Demolition Derby in
the Upper Cumberland...**

Expecting 45 – 55 cars

Rules available June 1 @ www.putnamcountyfair.org



Contact – Matt Groover – 931-349-5368

Department 1300
ANTIQUÉ TRACTOR PULL

Thursday, August 1 – 6:30p

Committee: Jessica Clark, Chair, Curtis Taylor, Sandra Tinch, Travis Lee

Questions to Jessica Clark – 931-319-5046

Premiums: 1st \$50, 2nd \$30, 3rd \$20

King of the Hill Classes Winner: \$100

Hook Fee: \$20 per pull – pull as many times as you want.

All general rules for the Warren County Antique Tractor Pulling Association apply along with:

1. Must be 1965 or older.
2. Tractor engine limited to one inline six cylinder gasoline or diesel.
3. All classes may run up to an 18.4-38 tire.
4. Any type of wheel permitted.
5. Front weights may not extend more than 11' from the center of the rear axle to the furthest point forward.
6. 20" maximum drawbar height, 18" minimum drawbar length from center of the rear axle to pull point.
7. No RPM limit.
8. Tractors in 4 mph class may not exceed 4 mph, 6 mph class may not exceed 6 mph. If horn blows for excessive speed after 100 ft., pull over & footage measured at the point the horn blew. Failure to stop will result in disqualification.
9. Each puller has two attempts to pass the 25 foot mark.
10. Check general rules for other requirements.

Classes: Antique	Farm Stock	King of the Hill
Powder Puff		
4000 6000	4500	4750
5500		
4500 6500	5500	6250
5000 7000	6500	
5500 7500	7500	

Classes subject to change. Check www.putnamcountyfair.org for latest information.