

SECTION E - LIVESTOCK, DAIRY, POULTRY – YOUTH & ADULTS

Department 500 OPEN BEEF CATTLE SHOW



Committee: Jeremy Glascock, Chair, Wayne Key, Angie Glascock, Trent Jones,
Olivia Rathunde, John Hoover and Ashley Hoover

Saturday, August 8th -- 4p – Big Barn

Cattle in the barn by 2:00p

Premiums Offered: \$5,200

Premiums: \$40, \$35, \$30, \$25, \$20

Entry Fee: \$5

\$20 to Top Putnam Co. Exhibitor

Rules:

1. Registration certificates required & tattoos may be check by committee
2. Exhibitors will adhere to state animal disease control rules listed in the back of the fair book.
3. All animals must be in place by 2p on Saturday.
4. Only 2 entries per class per exhibitor.
5. Stall space may be assigned by the committee.
6. All bulls over 6 months will be tied with neck ropes & led by a nose ring.
7. NO DOGS allowed in the big barn except for service dogs.
8. No beef cattle or tack will be allowed in before 8a Saturday.
9. Show order will be based on random draw of breeds present.
10. Cow and calf pairs are eligible for Championship.
11. Classes must have a minimum of 10 head per breed on the day of the show

or will compete in other breed classes. Other Breed Classes offered are Ear & Non-Ear Influence, Commercial.

12. Supreme Champion Female -- \$100 premium -- selection following all breed champions.

Classes

1. Novice Showmanship
2. Junior Showmanship -- 4th -- 5th grades
3. Junior High Showmanship -- 6th -- 8th grades
4. Senior Showmanship -- 9th -- 12th grades
5. Jr. Heifer calved after Jan. 1, 2019
6. Late Sr. Heifer calved November 1--December 31, previous year
7. Early Sr. Heifer calved September 1 -- October 31, previous year
8. Late Summer Yearling calved July 1 -- August 31, previous year
9. Early Summer Yearling calved May 1 -- June 30, previous year
10. Late Jr. Yearling calved March 1 -- April 30, previous year
11. Early Jr. Yearling calved January 1 -- February 29, previous year
12. Sr. Yearling Heifer calved September 1 -- December 31, two years ago
13. Cow with current year's calf
14. Grand Champion Female -- Rosette Ribbon
15. Reserve Grand Champion Female -- Rosette Ribbon
16. Supreme Champion Female -- Rosette Ribbon and \$100
17. Jr. Bull Calf after January 1, current year
18. Late Sr. Bull Calf calved November 1 -- December 31, previous year
19. Early Sr. Bull Calf calved September 1 -- October 31, previous year
20. Late Summer Yearling calved July 1 -- August 31, previous year
21. Early Summer Yearling calved May 1 -- June 30, previous year
22. Late Jr. Yearling calved March 1 -- April 30, previous year
23. Early Jr. Yearling calved January 1 -- February 28, previous year
24. Sr. Yearling Bull calved September 1 -- December 31, two years ago
25. Two-Year-Old Bull calved January 1 -- August 31, two years ago
26. Grand Champion Bull -- Rosette Ribbon
27. Reserve Grand Champion Bull -- Rosette Ribbon
28. Top Placing County Animal in each class

Awards sponsored by Tractor Supply of Cookeville and Clarence Tays.

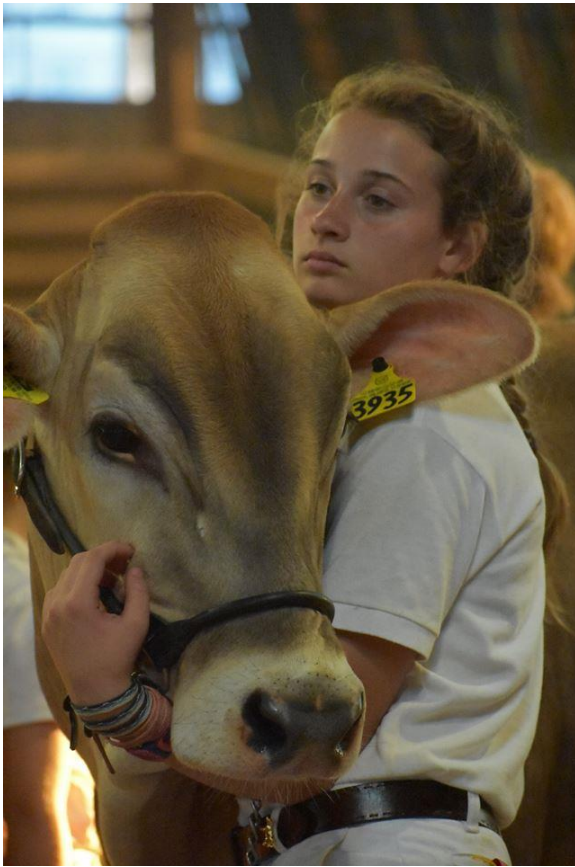
Department 550

OPEN DAIRY CATTLE SHOW

Registered Jersey, Guernsey, Holstein, Ayrshire, Brown Swiss & Milking Shorthorn

Tuesday, August 4 -- 6p -- Big Barn

Cattle in the barn by 4p



Committee: Dr. George Boyd, Chair, Jeremy Glascock, Wayne Key, and Trent Jones

Premiums: \$12,000

Premiums Classes 1 – 7 \$40, \$35, \$30, \$25, \$20

Premiums Classes 9 –13 \$50, \$40, \$30

Breeders Herd \$50, \$45, \$40, \$35, \$30

\$15 to top Putnam County Exhibitor in both of the above

Junior & Senior Champion & Reserve (1-7) (9-13) – Rosette Ribbon

Grand Champion – Rosette Ribbon

Special Rules:

1. An Exhibitor is a person, family or partnership who operates one farm unit & shows dairy cattle at the Putnam County Fair and may be referred to as one farm.
2. Entries will give name and address of Exhibitor.
3. Present registration papers & official health certificate to clerk before the show begins.
4. No more than two premiums will be paid in individual classes to one farm, except Putnam County Juniors.
5. Breeder's Herd will be limited to one entry from each farm.
6. Show starts with Spring Jersey Heifer Calf and alternate breeds as listed.

7. Yearlings in milk will show as Jr. 2-year-old.
8. Uniform, standard Dairy Show Rules and ages apply in any case not covered.
9. Wood shavings will be provided. We request no other bedding be used.

Classes:

1. Spring Heifer Calf born March 1, or after, current year
2. Winter Heifer Calf born December 1, previous year – February 28/29 (if leap year), current year
3. Fall Heifer Calf born September 1 – November 30, previous year
4. Summer Yearling Heifer born June 1 – August 31, previous year
5. Spring Yearling Heifer born March 1 – May 31, previous year
6. Winter Yearling Heifer born December 1, two years ago – February 28/29 (if leap year), previous year
7. Fall Yearling Heifer born September 1 – November 30, two years ago
8. Junior Champion & Reserve Junior Champion (Classes 1-7)
9. Cow, Junior 2-Year-Old born March 1 – August 31, two years ago
10. Cow, Senior 2-Year-Old, born September 1, three years ago – February 28/29 (if leap year), two years ago
11. Cow, 3-Year-Old, born September 1, four years ago – August 31, three years ago
12. Cow, 4-Year-Old, born September 1, five years ago – August 31, four years ago
13. Cow, 5 and Over, born before September 1, five years ago
14. Senior Champion & Reserve Senior Champion
15. Grand Champion
16. Breeders Herd – 4 females, bred and now owned by Exhibitor

**Pre-Registration is not necessary. Questions to Dr. George Boyd,
931-528-8805**

Department 600
OPEN SHEEP SHOW
Sunday, August 2nd – 2p – Big Barn



Committee: Jeremy Glascock, Chair, Angie Glascock, Wayne Key, Trent Jones, Olivia Rathunde, John Hoover and Ashley Hoover

Premiums Offered: \$ \$2,900

Premiums: \$15, \$13, \$11, \$10

Entry Fee: \$3

Sheep must be in the barn by 1:00p

Weigh-In 1:00p – 1:30p

Show at 2:00p

Rules:

1. Competition is open to youth and adults.
2. An exhibitor can enter a maximum of two lambs in any one class.
3. An exhibitor can exhibit 4 market lambs & 4 commercial ewes (2 yearlings & 2 ewes)
4. Market lambs must weigh in at least one hour before show time.
5. Sheep must have a certificate of veterinary inspection & must correspond with permanent identification (ear tag). PAPERS WILL BE CHECKED.
6. All sheep must have scrapes tags.

OPEN BREEDING SHOW

Breed Show Order will be random draw. Must have a minimum of 10 head per breed or they must compete in other breed classes.

1. Sr. Ram Lamb (Sept. 1 – Dec. 31, last year)
2. Early Jr. Lamb (Jan. 1 – Feb. 14, last year)
3. Late Jr. Ram Lamb (Feb. 15, last year and after)
4. Champion Ram – Rosette Ribbon
5. Reserve Champion Ram – Rosette Ribbon

6. Senior Yearling Ewe (Sep.1, 5 years ago – Feb. 14, two years ago)
7. Junior Yearling Ewe (Feb. 15 – Aug. 31, two years ago)
8. Senior Ewe Lamb (Sept. 1 – Dec. 31, two years ago)
9. Early Jr. Ewe Lamb (Jan. last year)
10. Intermediate Jr. Ewe Lamb (Feb. last year)
11. Late Jr. Ewe Lamb (March 1, last year and after)
12. Champion Ewe – Rosette Ribbon
13. Reserve Champion Ewe – Rosette Ribbon
14. Flock (5 head: ram lamb, 2 yearling ewes, 2 ewe lambs)
15. Top Placing County Owned Animal in Each Class

MARKET LAMB AND COMMERCIAL EWE SHOW

Premiums: \$15, \$13, \$11, \$10

1. Novice Class – 4th Grade & Under – Ribbon Only
2. Senior Level 2 11th & 12th Showmanship Class –
Premiums: \$15,\$13,\$11,\$10
3. Senior Level 1 9th & 10th Grades Showmanship Class –
Premiums: \$15,\$13,\$11,\$10
4. Jr. High Showmanship Class – 7th-8th Grades
Premiums: \$15,\$13,\$11,\$10
5. Jr. Showmanship Class – 5th – 6th Grades
Premiums: \$15,\$13,\$11,\$10
6. – 11. Market Lamb – Divided by Weight
12. Champion Market Lamb
13. Reserve Champion Market Lamb
14. – 19. Commercial Ewe Lamb
20. Champion Commercial Ewe Lamb
21. Reserve Champion Commercial Ewe Lamb
22. Commercial Ewe 150 lbs. and Under
23. Commercial Ewe 151 lbs. and Up
24. Champion Commercial Yearling Ewe
25. Reserve Champion Commercial Yearling Ewe
26. Top Placing County Owned Animal in Each Class



Department 650
OPEN JUNIOR GOAT SHOW
Saturday, August 1st – 4:00p – Big Barn



(All goats must be in the barn by 2p)

Committee: Jeremy Glascock, Chair, Angie Glascock, Wayne Key, Trent Jones, Olivia Rathunde, John Hoover and Ashley Hoover

Premiums: \$1,200
Entry Fee: \$3

Premiums: \$15, \$13, \$11, \$10
\$10 to Top Putnam Co. Exhibitor

Champion and Reserve Champion – Rosette Ribbons

Showmanship Classes: Novice – younger than 4th grade; Explorer -- 4th Grade; Junior -- 5th 6th Grades; Junior High -- 7th 8th Grades; Senior High -- 9th 12th Grades.

Rules:

1. Weigh in at the Barn from 3p – 3:30p. Show starts at 4p in the Big Barn.
2. Open to any junior. Juniors are 12th grade or younger as of January 1, current year.
3. Classes are divided by weight. They are not divided by breed.
4. All wethers show as Market Goats. No intact billies allowed to show.
5. All does show as Commercial Does.
6. There is no minimum weight.
7. All Market Goats must have their milk teeth.

- Commercial does will be broken into kid classes (milk teeth) & yearling classes (yearling teeth). Any doe with more than six permanent teeth is not eligible.
- All goats must have proper i.d. and health papers.
- Show management reserves the right to make any needed changes.

Department 700

MARKET HOG SHOW



Friday, July 31st – 5p – Big Barn

Committee: Jeremy Glascock, Chair, Angie Glascock, Wayne Key, Trent Jones, Olivia Rathunde, John Hoover and Ashley Hoover

Entry Fee: \$3

Premiums: \$15, \$13, \$11, \$10

Competition Open to Youth & Adults

Rules:

- Animals must be in the barn by 3:00 pm All animals will be weighed off the trailer. Show at 5:00p
- All Entries are required to have a valid Health Certificate
- Limit 4 entries per exhibitor
- Animals may be barrows or gilts
- Classes will be determined by the Show Committee following the weigh in. There will be a maximum of 6 classes contingent on the weight and number of animals present.
- Minimum weight of 150 lbs.
- All animals must show out of the barn, no showing off of the trailer.

Showmanship

9. All birds will be tested on Thursday, July 30 by the state inspector.

Lot 1 – OPEN POULTRY

(ALL BIRDS MUST BE LARGE FOWL IN THIS LOT)

1. Egg Layers (Sex-Links and Leghorns) – cock, cockerel, hen, pullet
2. All Other Breed or Class – cock, cockerel, hen, pullet
3. Asiatic Class (Cochins, Langshans, Brahma) – cock, cockerel, hen, pullet
4. English Class (Orpington, Australorps, Sussex & Cornish) – cock, cockerel, hen, pullet.
5. American Class (Barred Rocks, Dominiques, Wyandottes, Rhode Island Reds, Buckeyes, Jersey Giants, New Hampshires) – cock, cockerel, hen, pullet.

LOT 2 – OPEN MISCELLANEOUS

Turkeys, Geese, Ducks, Bantam Ducks, Guineas (Can Show as a single)
Rabbits (Pair of White, Pair of Gray, Pair of Rabbits any other breed)

LOT 3 – OPEN BANTAM

(ALL BIRDS MUST BE BANTAM SIZE IN THIS LOT)

1. Old English Class(BB Red, White, Blue/Red, Silver Duckwing, Black, Fawn, Cele)
2. Featherlegged Class (Cochin, Frizzles, Brahmas, Langshans, Silkies)
3. All Other Combs Clean Legged (Ameraucanasm, Cornish, Polish, Shamos)
4. Rose Combed Clean Legged (Belgian Bearded d’Anvers, Dominiques, Rosecomb, Seabrights, Wyandottes)
5. Single Comb Clean Legged (Australorps, Dutch, Japanese, Leghorns Rhode Island Reds, Orpingtons, Plymouth Rocks, Sussex)

LOT 4 – JUNIOR POULTRY

1. All rules same as open except exhibitor must be 17 years old or less.
2. Ribbons & Cash Premiums awarded 1st – 4th place in each class
3. Premiums same as adult classes.

Standard Breed Classes	Bantam Classes	4-H Chick Chain
cock/cockerel/hen/pullet	cock/cockerel/hen/pullet	one pullet

LOT 5 – TABLE-TOP SERAMA SHOW

Saturday, August 1, 9a Chicken House

Hosted by the Seramas of the East Coast Club **Judge: Brian Cash**

Coop-in: Friday, July 31 5p – 8p & Saturday, August 1 at 7a

Entry Fee: \$3 per bird for Open Show \$1 per bird for Junior Show

Early registration encouraged

Please email your entries to info@putnamcountyfair.org

SONA Rules apply and SCNA scorecard will be used for judging

Out of state birds need valid NPIP certificate. A state inspector will be available for testing birds Saturday morning.

Open & Junior Show (18 years and under) Classes and Awards to be offered:

Over-All Champion of the Show \$25

Over-All Reserved Champion of the Show \$15

Traditional Male Champion \$10

Traditional Female Champion \$10
Frizzled Male Champion \$10
Frizzled Female Champion \$10
Silkied Male Champion \$10
Silkied Female Champion \$10
Ayam Male Champion \$10
Ayam Female Champion \$10

Special for Junior Show

1. The Seramas of the East Coast will donate a Black pair of young seramas for breeding and showing to be awarded to a junior participating in the show via drawing.
2. Jodi Frye will give a workshop on showing a Serama chicken Table-Top competition, 9a Saturday, August 1. Any junior not having a Serama to show extra birds will be available for loan.

